

The background of the slide is a photograph of a majestic, snow-covered mountain range under a clear blue sky. The mountains are rugged, with sharp peaks and deep valleys filled with snow. The lighting suggests a bright, sunny day, with shadows cast across the snow. A thin white line, possibly a power line or cable, stretches across the upper right portion of the sky.

SAP Cloud for Sustainable Enterprises: Taking Action Together

SAP Enterprise Architect Virtual Global Summit

March 2, 2022

Jim Sullivan, Head of Product Management, Sustainability, SAP

This is Economics

Businesses once had to choose between profitability and sustainability. Now, with help from SAP, you can choose both. We have the people, technologies, and processes to bring it all together.

 [Watch the video](#)





During the 20th century...
Resource use grew >2x
population growth

A woman with long brown hair, wearing a light pink blazer and black pants, is walking away from the camera through a brightly lit mobile phone store. The store features colorful walls in shades of orange, blue, green, and purple. In the foreground, there are white display tables with various smartphones on them. To the left, there are shelves with more phones and accessories. A sign on the wall says "Bättre ljud Bättre koll Bättre skydd". Another sign on the right says "SELFIEPINNE". The floor is a light-colored tile. The overall atmosphere is modern and vibrant.

**In North America there are
already ~12.9 connected
devices per person**

Source: Statista and Deloitte



**We are now producing ~20
garments each year for
every person on earth**

Source



90%

RECYCLED



91%

WASTE

Source: Circularity Gap Report

An underwater photograph showing a large, spotted shark swimming towards the camera. The shark's body is covered in a pattern of dark spots on a lighter background. In the foreground, a large, crumpled white plastic bag is floating. The background is filled with various pieces of plastic waste, including bags and fragments, floating in the water. The overall scene is set in a clear, blue-green underwater environment.

Ocean plastic waste expected **to triple by 2040**

[Source](#)

70% of global GHGs related to material handling and use



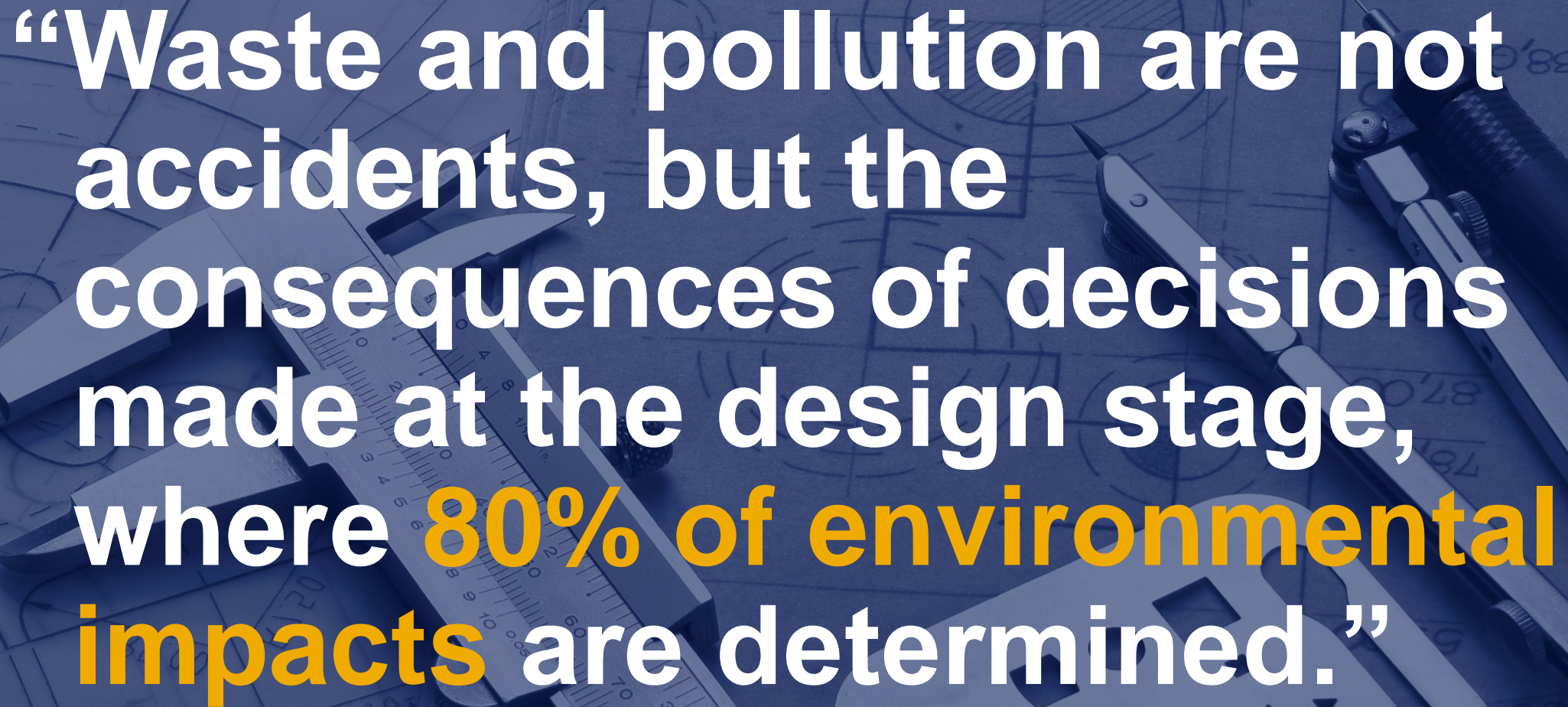


...as is >90% biodiversity loss



1 ton of circuit boards are estimated to contain 40-800 times more gold and 30-40 times more copper than one ton of mined ore

Source

The background features a dark blue, semi-transparent overlay over a collection of drafting tools and blueprints. Visible tools include a pair of compasses, a pencil, a ruler, and a set square. The blueprints underneath show various technical drawings, including circles, lines, and some handwritten numbers like '138', '870', and '781'.

“Waste and pollution are not accidents, but the consequences of decisions made at the design stage, where **80% of environmental impacts** are determined.”

Based on Ellen MacArthur Foundation, 2020.



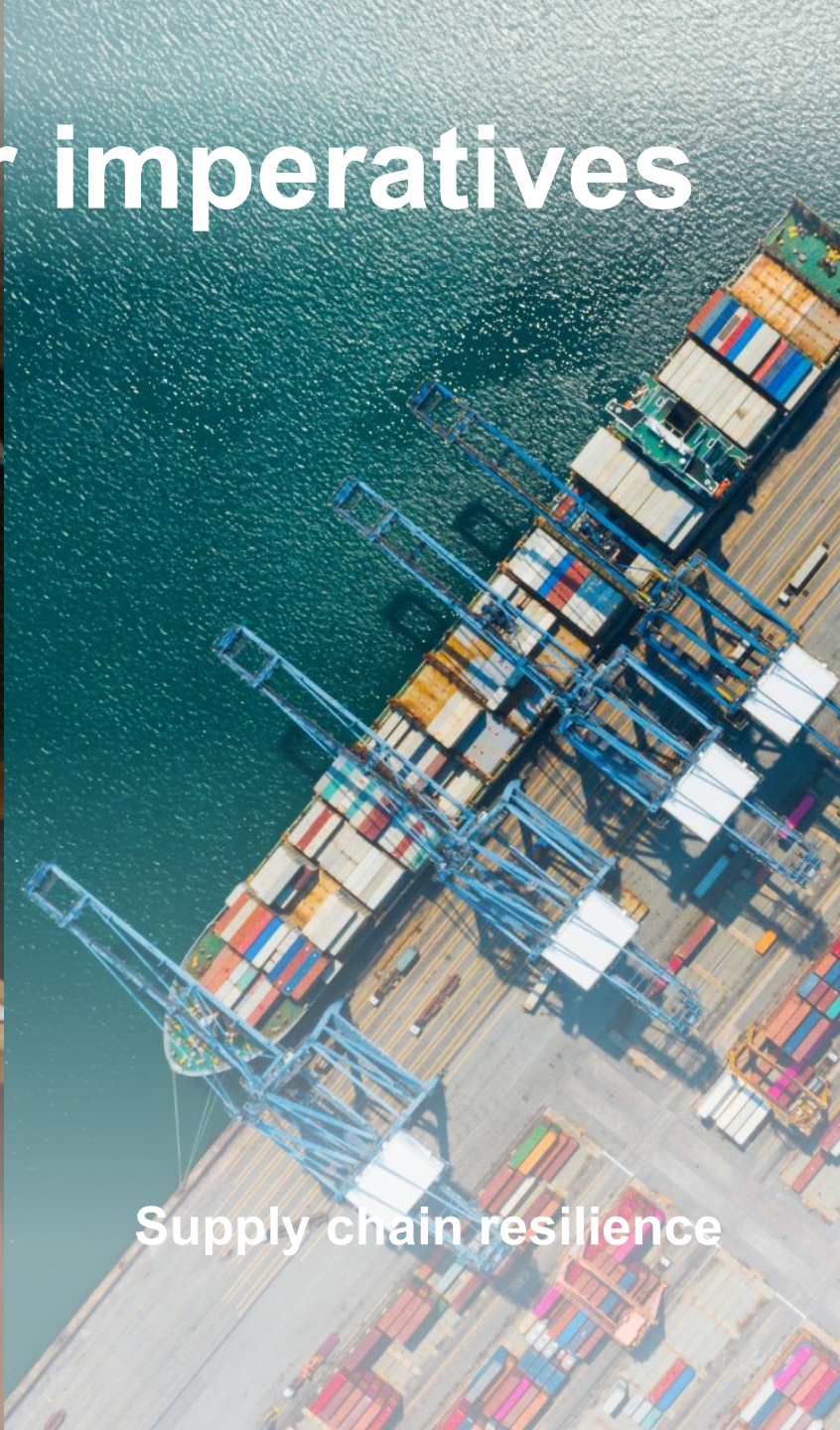
Our purpose

Help the world run better
and improve peoples' lives

Customer imperatives



Business transformation

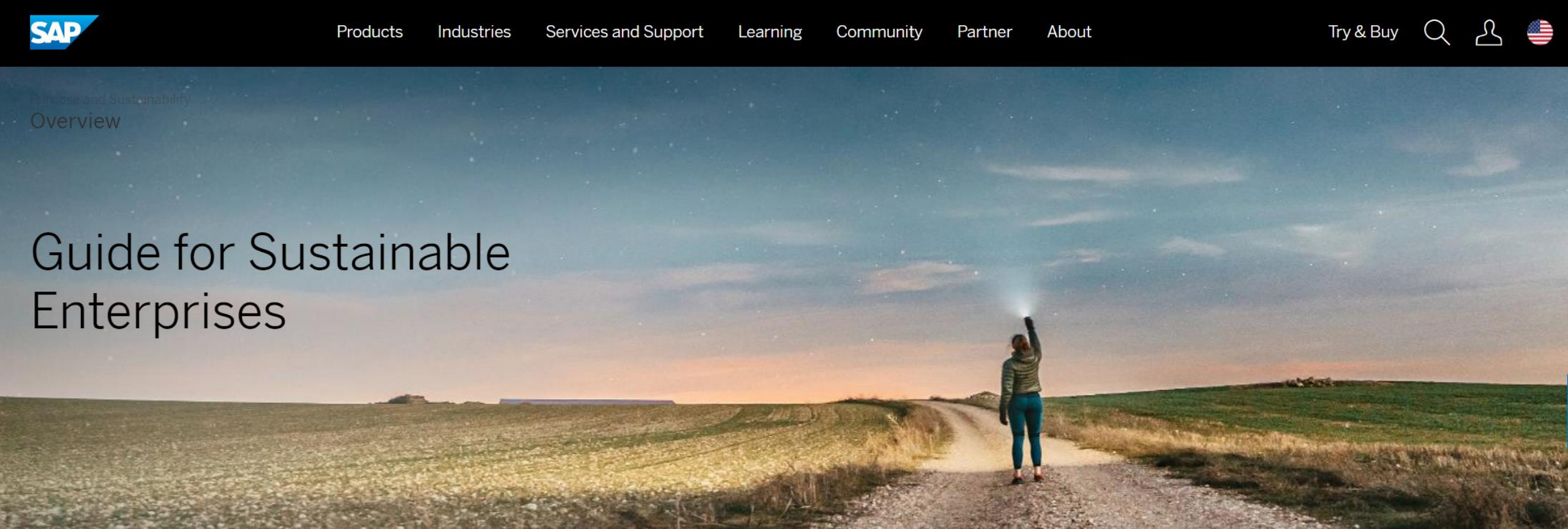


Supply chain resilience



Sustainability outcomes

Guide for Sustainable Enterprises

[Overview](#)[Five Actions for Sustainable Business](#)[Customer Stories](#)[SAP Partners](#)[SAP Cloud for Sustainable Enterprises](#)[Net-Zero Commitment](#)

Five Actions for Sustainable Business

Create a sustainable world together



Zero emissions

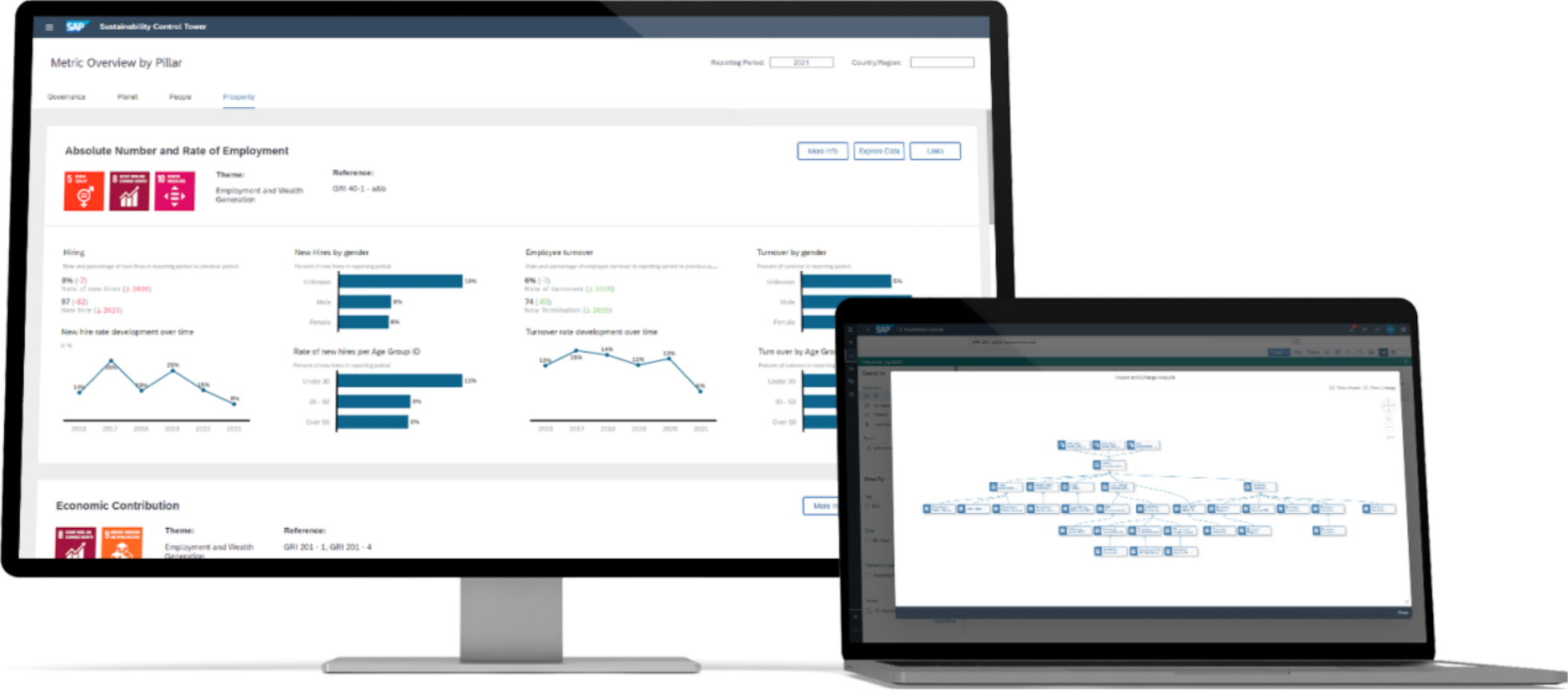


Zero waste



Zero inequality

SAP Cloud for Sustainable Enterprises



Sustainability and ESG Reporting and Steering

Zero Emissions with Climate Change Solutions

Zero Waste with Circular Economy Solutions

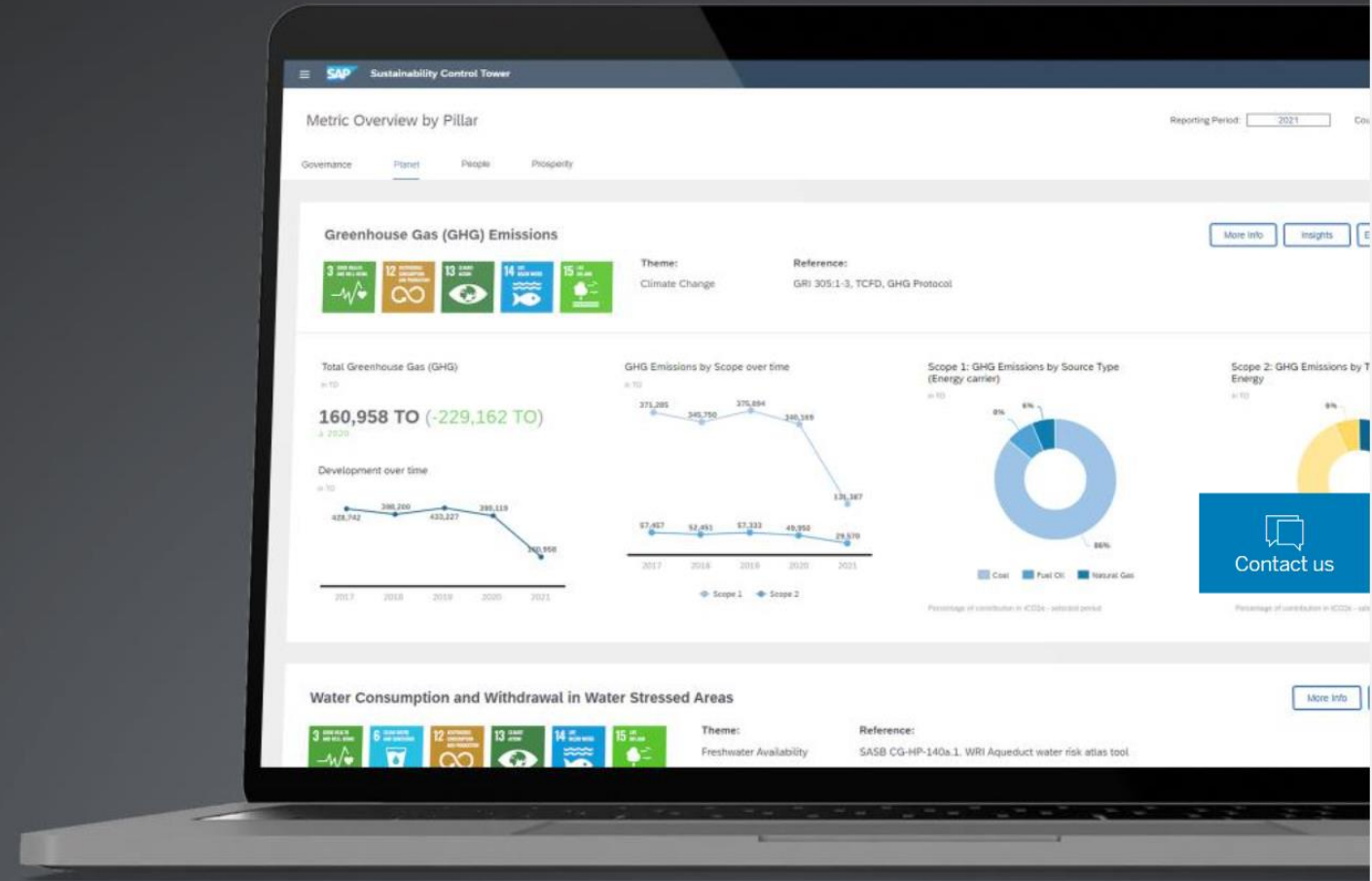
Zero Inequality with Social Responsibility Solutions

SAP Sustainability Control Tower

Reach your sustainable business ambitions with holistic enterprise-wide sustainability performance management.

Watch the video

Request a demo



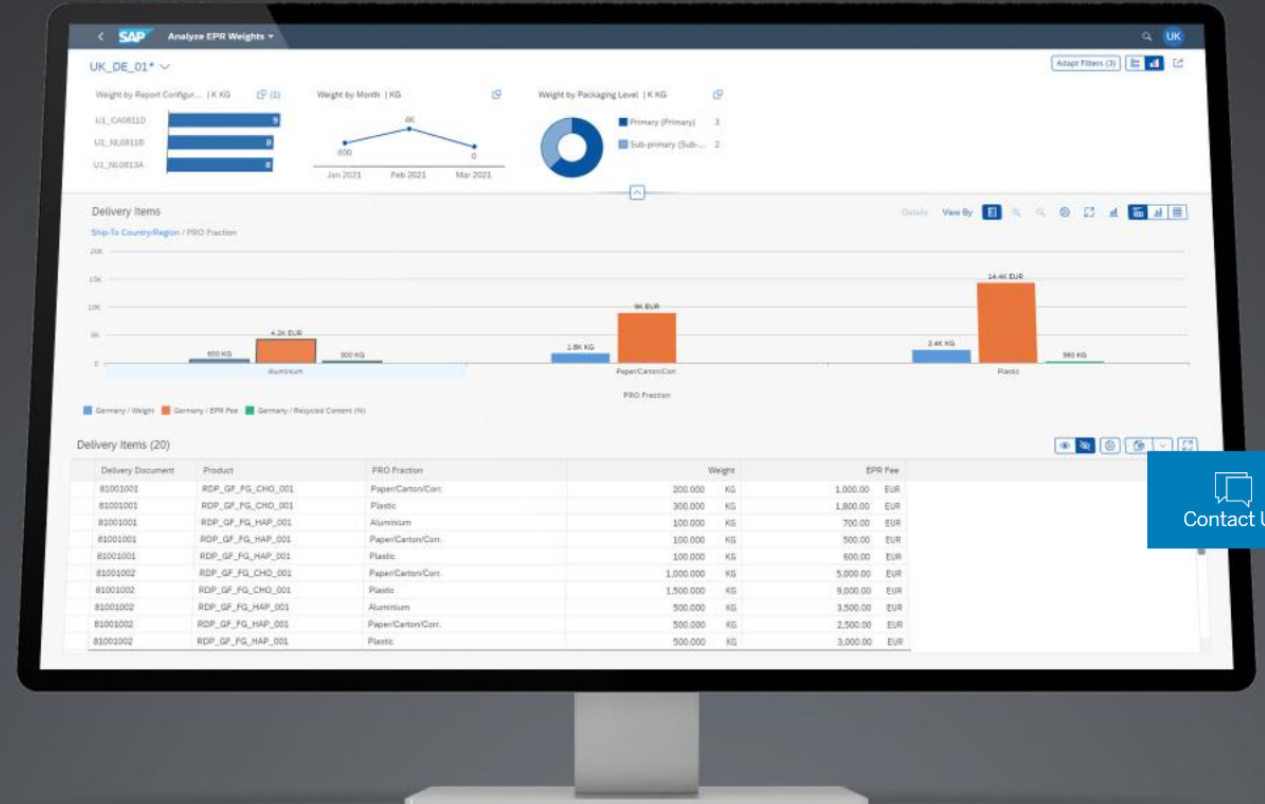
Improve your ESG transparency and sustainable business performance

SAP Responsible Design and Production

Calculate extended producer responsibility (EPR) obligations, plastic taxes, and corporate commitments to optimize material choices.

[Request a demo](#)

[Watch the overview video](#)



[Contact Us](#)

Start acting on a circular economy and eliminate waste

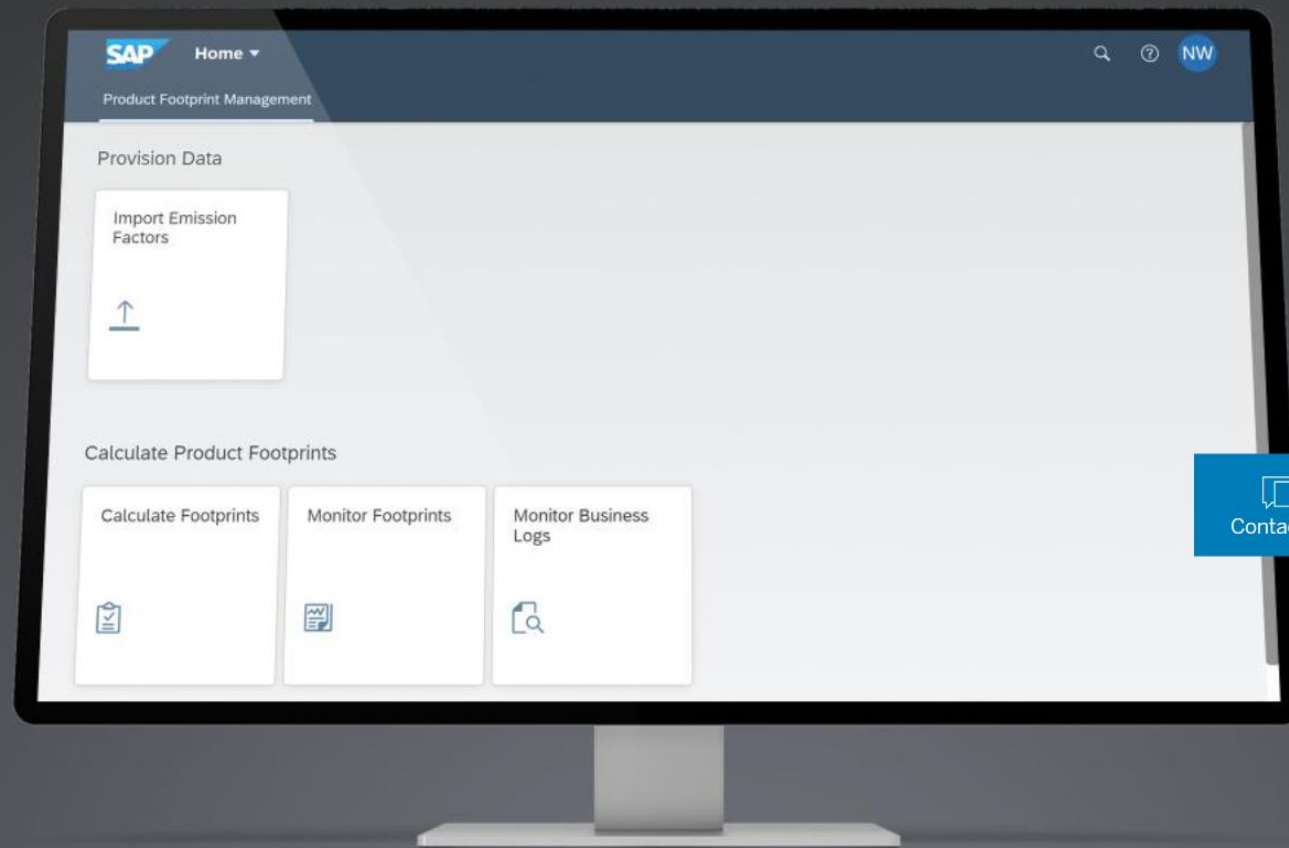
Design products sustainably and build a regenerative business in a circular economy.

SAP Product Footprint Management

Calculate product footprints periodically and at scale across the entire product lifecycle.

[Request a demo](#)

[Watch the overview video](#)



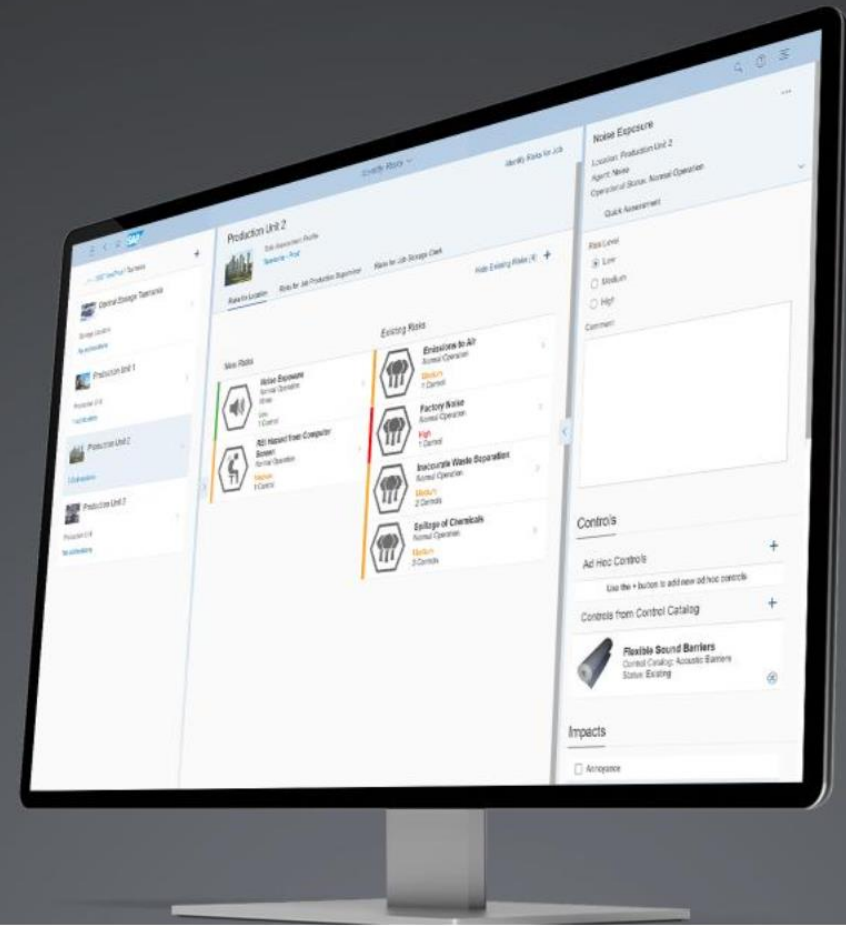
Start acting on climate change and reduce
product footprints

SAP Environment, Health, and Safety Management

Respond and recover while ensuring the safety of employees and customers in times of change with integrated EHS management.

[Request a demo](#)

[Watch an overview video](#)



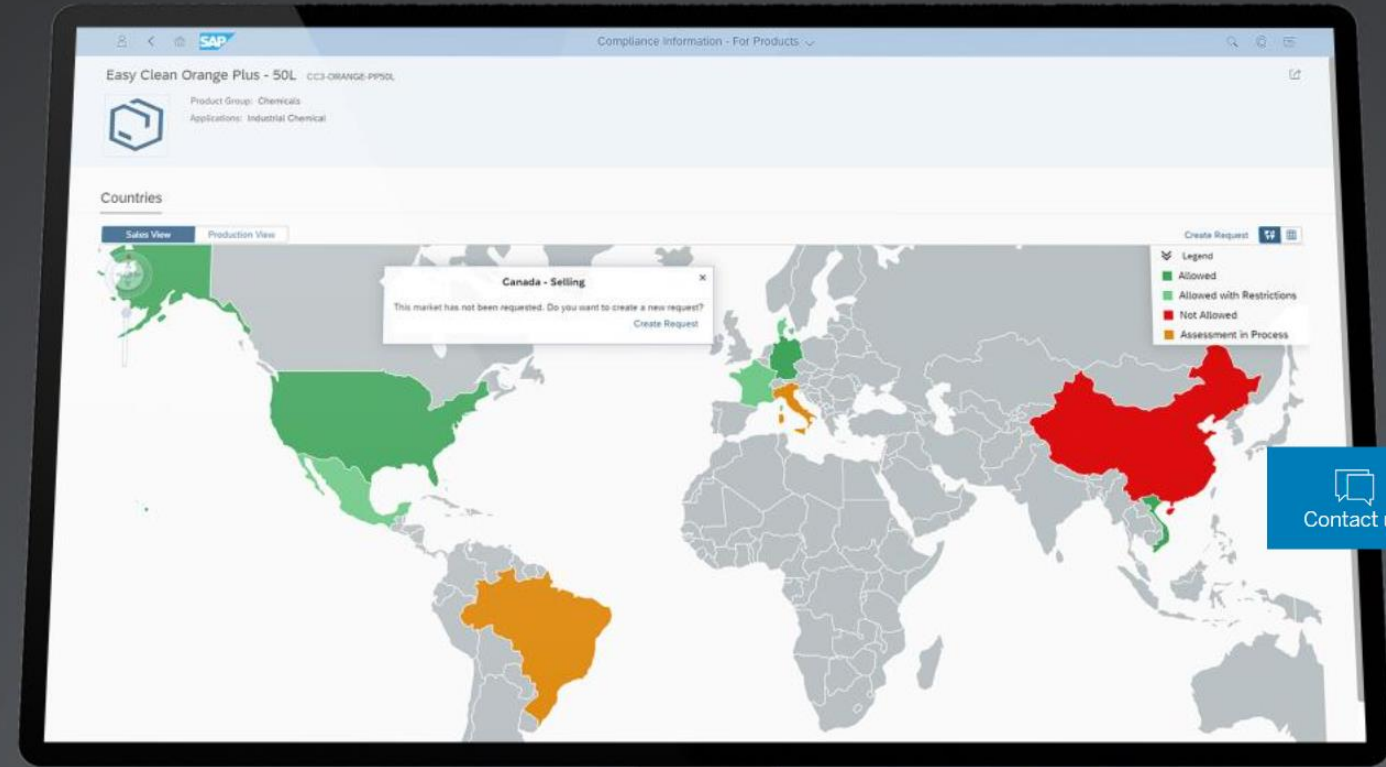
[Contact us](#)

Mitigate risk with integrated environment,
health, and safety management

SAP S/4HANA for product compliance

Ensure compliance throughout the product lifecycle with automated compliance processes.

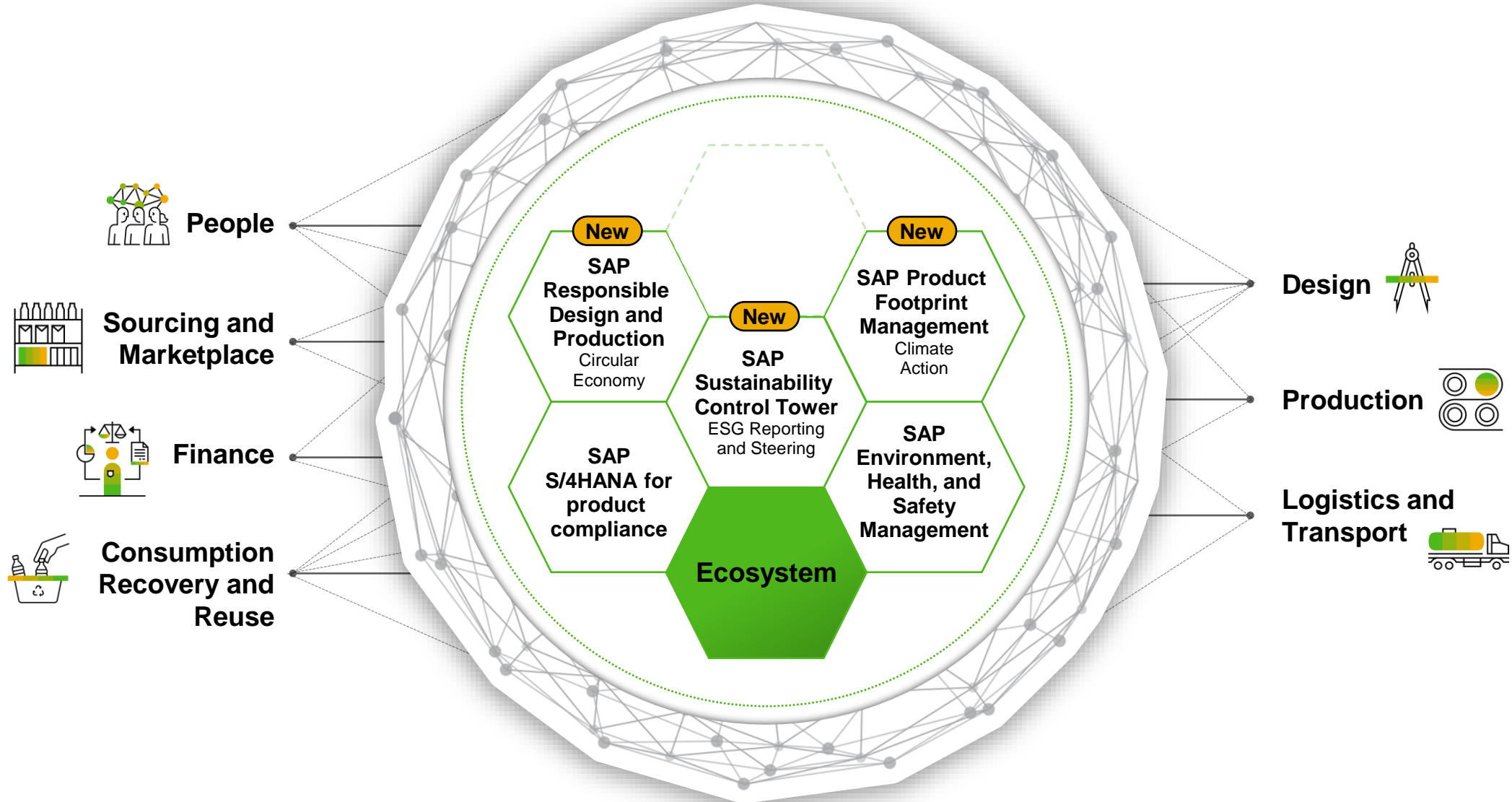
[Request a quote](#)



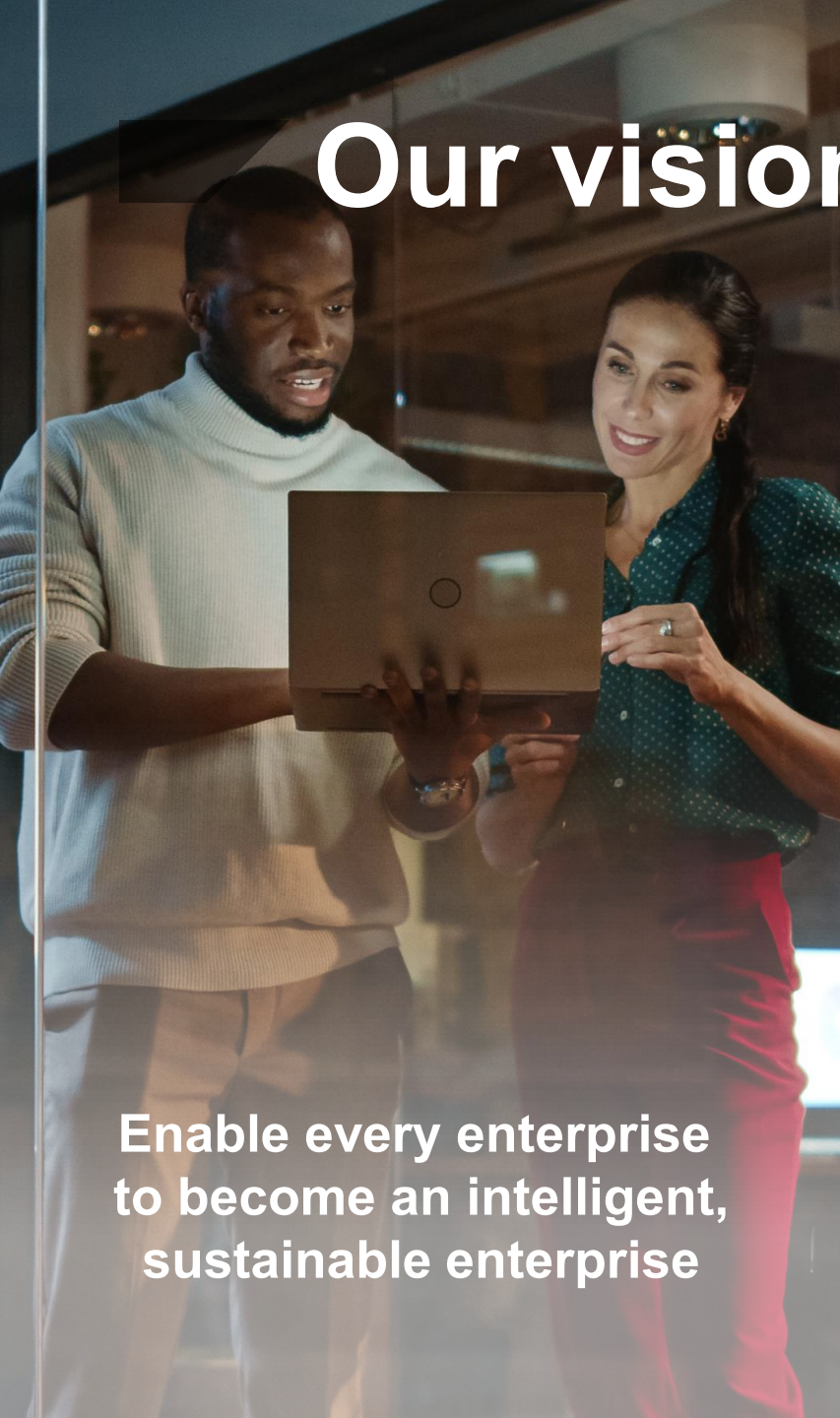
Protect revenue and drive sustainability by
automating product compliance

SAP Cloud for Sustainable Enterprises. Introducing the “Green Line”

Embedded in business processes. Into networks.



Our vision



Enable every enterprise
to become an intelligent,
sustainable enterprise



Bring enterprises together
into a global business network



Create a sustainable
world together



SAP Cloud for Sustainable Enterprises

Driving business innovation together

Jim Sullivan
Head of Product Management, Sustainability
j.sullivan@sap.com